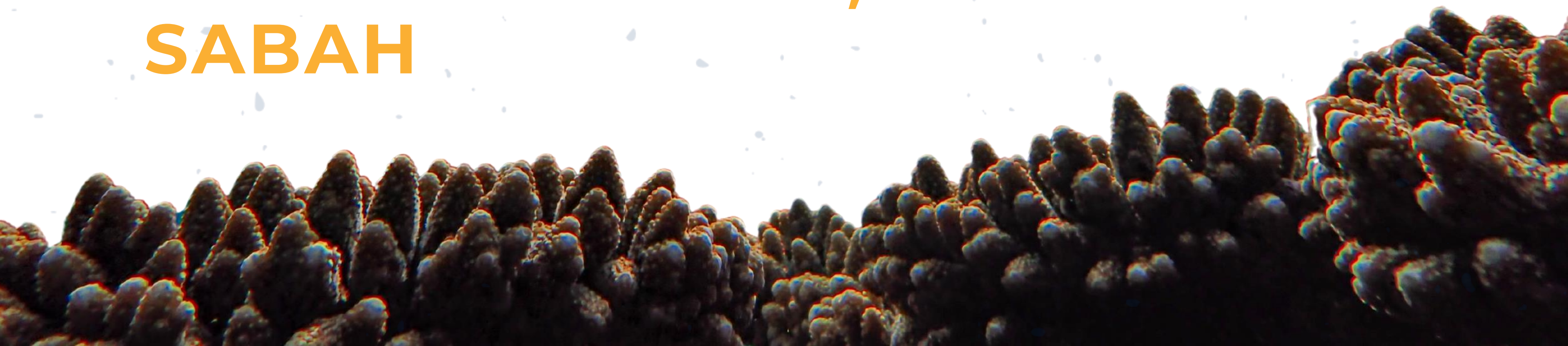


# COMMUNITY-BASED MANAGEMENT OF MARINE RESOURCES FOR LARAPAN ISLAND, SABAH



**Reef Check**  
MALAYSIA



# OUR TEAMS



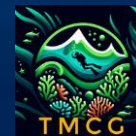
## PULAU REDANG

- Promote sustainable tourism and coral reef rehabilitation on the island.
- Empowering local communities through marine conservation efforts, including coral rehabilitation, removal of ghost nets, and training local youths as EcoDivers and being part of RMCG.



## PULAU TIOMAN

- Working to protect the coral reefs around Tioman and to improve the livelihoods of the local community.
- Ensuring sustainable use of the island's natural resources for the benefit of all stakeholders.



## PULAU MANTANANI

- Supporting the local community in establishing a community-managed protected area at the islands.
- Working on raising awareness and involving locals in the waste management on the island.
- Focuses on building strong relationships and strategic partnerships with government agencies, non-governmental organizations (NGOs), and key stakeholders to enhance marine conservation effort
- Work to integrate science-based conservation initiatives into sustainable coastal and marine management



## KOTA KINABALU

## SEMPORNA

- Advocating for active participation and empowerment of local communities for a sustainable marine management.
- Trained local youths to do marine conservation work and actively working together with these CMCGs in our conservation work.



## KUALA LUMPUR

Reef Check Malaysia's head office

## MERSING



- Working to improve ocean health by increasing reef resilience and reducing threats to marine biodiversity from plastic pollution.
- Emphasizes on increasing local community and stakeholders' participation in the conservation and management of coral reefs, and the management of plastic waste in the Mersing group of islands.

## SOUTH OF JOHOR

- Aims to develop a comprehensive conservation strategy for coastal marine ecosystems in Southeast Johor.





# KEY PROJECT COMMUNICATIONS

**01**

Local community engagement

**02**

Government stakeholder engagement



# EMPOWERING COMMUNITY LEADERS TO CHAMPION ENGAGEMENT

- **Leadership in Engagement**

Community leaders within the Larapan Marine Conservation Group (LMCG), such as Mad and Mazni, play a pivotal role in facilitating dialogue and building trust with the local community.

- **Integrating GEDSI**

These leaders champion the integration of Gender Equality, Disability, and Social Inclusion (GEDSI) by introducing and contextualizing the concept in ways that resonate with the community.

- **Culturally Aligned Consultation**

Engagement processes are designed around the community's timing, needs, language, and activities, ensuring inclusive participation and genuine ownership of conservation efforts.



# BUILDING RAPPORT WITH GOVERNMENT



- **Securing Multi-Level Government Support**

The project gained recognition and endorsement from key agencies, including the Sabah Biodiversity Council (SaBC), the District Office, and other relevant authorities, ensuring legitimacy and alignment with state priorities.

- **Inclusive and Adaptive Engagement**

Local communities were actively involved through both formal and informal meetings, with communication tailored to different stakeholders to make the project relevant to their specific priorities.

- **Aligning Interests with Sectoral Priorities**

For SaBC, the focus was on traditional knowledge, biodiversity conservation, and indigenous rights, while for the fisheries sector, the emphasis was on sustainable fish stocks and granting communities management rights over their marine resources.



The Community Protocol for marine conservation is still in its infancy in Sabah, making it quite challenging to establish without a solid precedent and robust support.



We collaborate with various governments and are always receptive to different approaches, as long as they effectively meet the objectives of this project.

Development is outpacing the change we desire; now the island is in the process of adding two more resorts.



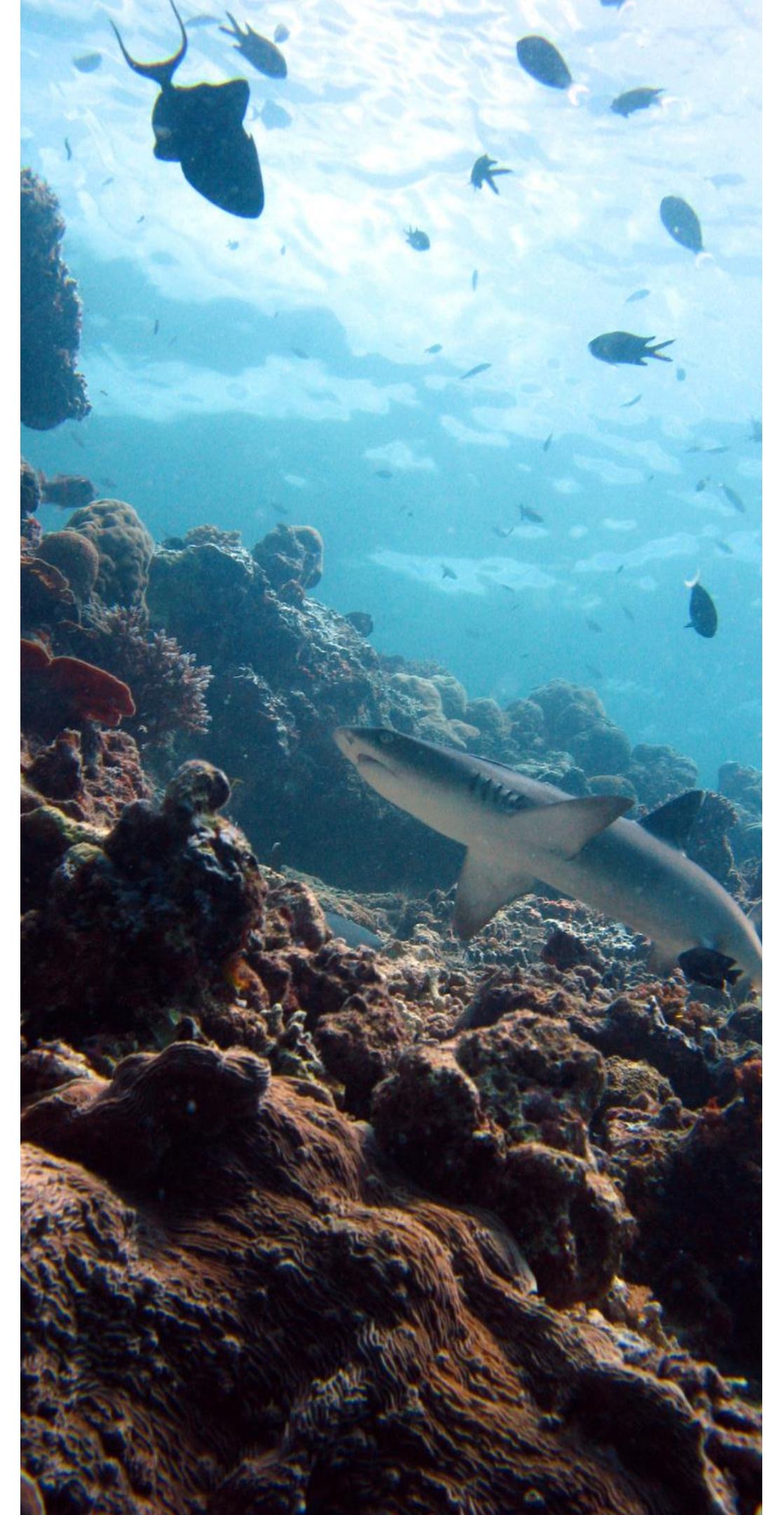
Locals are dedicated to raising awareness about their island and its challenges, despite limitations. By empowering them, we help them take ownership of their narratives and share their stories to gain support.

Women frequently encounter challenges when it comes to voicing their opinions in discussions.



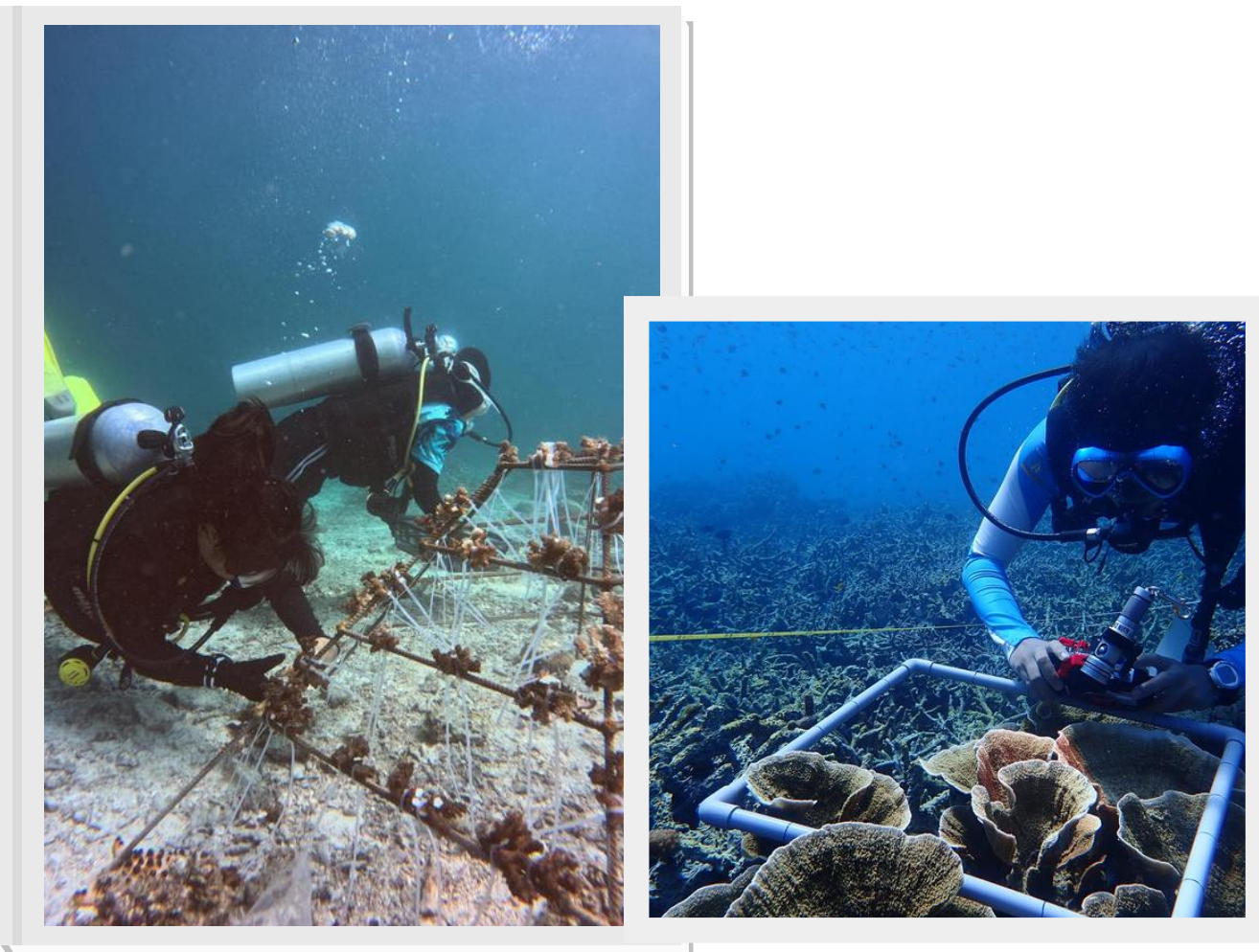
The women's empowerment initiative at LMCG is helpful, as we have women leaders who are outspoken and capable of inspiring others to express their thoughts and desires.

## CHALLENGES & HOW WE OVERCOME THEM





# LET'S CONNECT



Call 03-2161 5948

[www.reefcheck.org.my](http://www.reefcheck.org.my)

[hello@reefcheck.org.my](mailto:hello@reefcheck.org.my)

Lot 5.19-5.22, Wisma Central, Jalan  
Ampang, 50450, Kuala Lumpur